

“CUTTING REMARKS”

The Official Publication of the Old Pueblo Lapidary Club
520-323-9154

Officers

President Victoria Fila 664-0302
Vice President Dave Richardson 245-2172
Secretary Bill Penrose 780-1143
Treasurer Mark Davidson 975-6075

Board of Directors

2021 - 2022 David Schulte 954-8554
2021 - 2022 Donovan Wagner 869-2050
2022 - 2023 Ted Rupp 743-8012
2022 - 2023 Mike Tucker 400-9656
2022 Elizabeth Boccoardo 245-0923

Membership Chairperson

Janet Keisler 333-3398

Please join us May 14, at **9AM** for the monthly meeting. There is an optional social hour that begins at 8:00am followed by the monthly meeting commencing at 9:00am. See meeting minutes for details.

Visitors are always welcome.



Articles or news to be included in the *Cutting Remarks* should be emailed to your Editor, Wayne Klement (wayneklem@aol.com) or call him at 520-954-6298. Submission deadline is the 20th of each month. Thanks!

THE PREZ SEZ by Victoria Fila, President

Hello everyone, I hope everyone is doing well.

We had a great time volunteering for our booth at the Pima County Fair. A lot of interest in joining or at least coming to a meeting to check us out.

Special thanks to all those who volunteered. David Schulte, Bill Penrose, Mariza Richardson, Steve Castle and Karen Castle, Mike Wendler, Sam Wyatt, Jean Barley, Malcolm Currie, Sandra Elizondo, Jim Rundlett, Jerry Glazman, Betty Powell, Wendy Hubber, John Poole, Victoria Fila. Dave special thanks for taking on the lead to set up the booth and getting everyone passes.



As we get more members signing up and wanting to use the labs will need more volunteers to have labs open or even teaching classes. So if you have been doing a lab for a while and think you can be a monitor please talk to the lab owner to show you can be a monitor or even teach a class.

We had our last field trip for the year in April. I will be working hard this summer to set up field trips starting late September/October through April. I have a few members who want to help with trips and will be setting up time to meet them. If anyone knows of any great areas for a field trip please contact me at 520-664-0302

Text is the best way to reach out to me as I work during the day.

Take care of yourselves and see you all at the next meeting 5/14/22.

Victoria Fila
OPLC President

WELCOME NEW MEMBERS



Erica Clum	Sarah Nelson
Pam Emerson	John Pocklington
Charles & Anita Hirschy	David Reese
Alex Kembitzky	Bob Scholl
Andreas Khechfe	Merbebe Solomon
Ken Kiger	David Swift
Monty McDaniel	

Cutting Remarks, Volume 2022, Issue 5, May 2022. Published monthly by the Old Pueblo Lapidary Club, 3118 N. Dale, Tucson, AZ 85712. Telephone: (520) 323-9154, a non-profit organization.

Old Pueblo Lapidary Club
General Meeting Minutes, April 9, 2022

Presentation for the meeting was given by David Schulte, on Inlay, David's Method.

Thanks to Wayne Klement for supplying the goodies for breakfast this morning. Volunteers to assist it this task are welcomed. Costs are covered by the club to a \$40 limit.

Motion to approve last month's club meeting minutes/newsletter. seconded? All in favor.

Treasurer Report - Given by Victoria Fila in Mark Davidson's absence. The OPLC Treasury is in good standing.

Membership status - (Janet Keisler) There were 320 members in good standing as of this meeting.

Field Trips - (Victoria Fila) David Richardson will be leading a field trip near Douglas on 4/16/2022. Jasper and chalcedony are the primary expected find. Marilyn Williams submitted the site but is unable to attend in person this trip. She brought examples of what you can find. Victoria will be planning field trips starting again in the fall.

Library status - (Bill Cascio) The library is in good shape.

Pima County Fair - (Dave Richardson) the fair starts 4/21/2022 and OPLC has a booth in the Old Pueblo Convention Building. Volunteers have been scheduled but the club needs items to show. Please contact Dave Richardson for entries.

Volunteers are still needed as lab monitors.

Door prize was won by David Weaver. Raffle proceeds were \$122.

The lab refrigerator will be replaced.

Members voted to adjourn the meeting.

Minutes recorded by Dave Richardson.

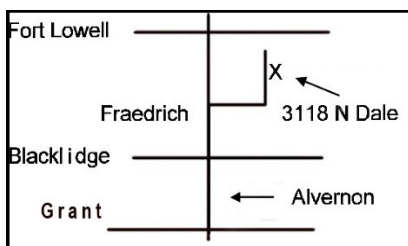
OPLC MEMBERSHIP INFORMATION

An application form can be downloaded from the Club website at: lapidaryclub.org/join_us.shtml

The membership fees shown below are informational purposes only and are listed on the form:

Type of membership:	<u>1st Quarter</u>	<u>2nd Quarter</u>	<u>3rd Quarter</u>	<u>4th Quarter</u>	<u>Annual Renewals</u>
Single Member	\$30.00	\$23.00	\$16.00	\$11.00	\$25.00
Couple (same address)	\$40.00	\$30.00	\$23.00	\$16.00	\$30.00
Junior	\$15.00	\$ 9.00	\$ 6.00	\$3.00	\$10.00

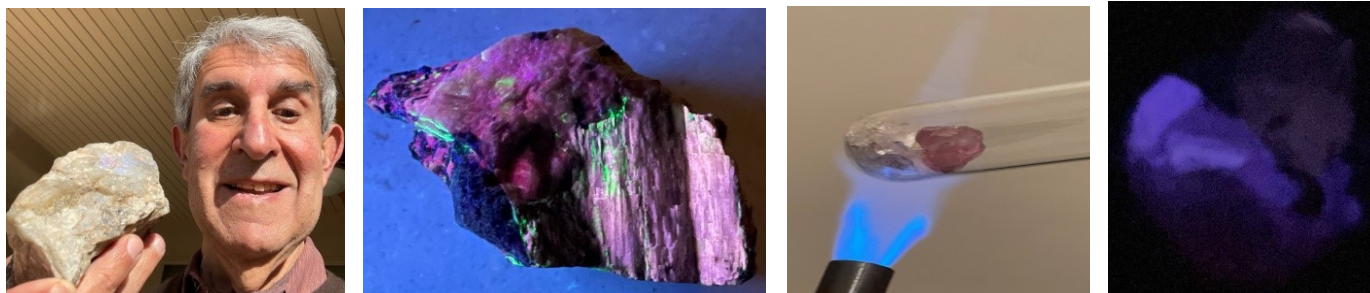
Old Pueblo Lapidary Club, 3118 N. Dale, Tucson, AZ 85712



The Business Meetings are held on the 2nd Saturday of each month except for December. A pre-meeting social hour is at 8:00 a.m., followed by an educational program, and ends with the monthly meeting. Visitors are most welcome.

May 14, 2022 OPLC speaker - Dr. Art Friedman

Minerals & Gems with Unusual Physical & Chemical Properties



We are in for a great treat for our May 14, 2022, OPLC monthly meeting, as a new speaker, Dr. Art Friedman, joins our speaker's roster. We welcome Art and his wife who moved to Tucson about 4 years ago. Art joined OPLC last year.

Dr. Art Friedman has lectured and given scientific presentations to over 50,000 people during the past forty years. His presentation **Minerals & Gems with Unusual Physical & Chemical Properties** will concentrate on strange or uncommon optical and other physical phenomena associated with minerals and a few gems from his personal collection, acquired over a 62 year period.

Dr. Art Friedman is a native of Philadelphia, PA. He received a B.S. degree in biological sciences and an M.S. degree in biochemistry from Drexel Institute of Technology. After a few years of industrial employment, he entered a Ph.D. program at Drexel University and received his doctorate in organic chemistry. Following 35 years of employment as a research and development scientist and manager with 16 U.S. Patents, he left industry and taught general chemistry, biochemistry, instrumental analysis and organic chemistry at the college level. Prior to retirement, Art also spent 12 years teaching AP biology, AP chemistry and honors physics at several Chicago-area high schools.

We look forward to this exciting presentation, as Art promises to show a recently discovered phenomenon which has been observed by very few individuals and also perform some old tests and techniques that aid in the identification of mineral specimens.

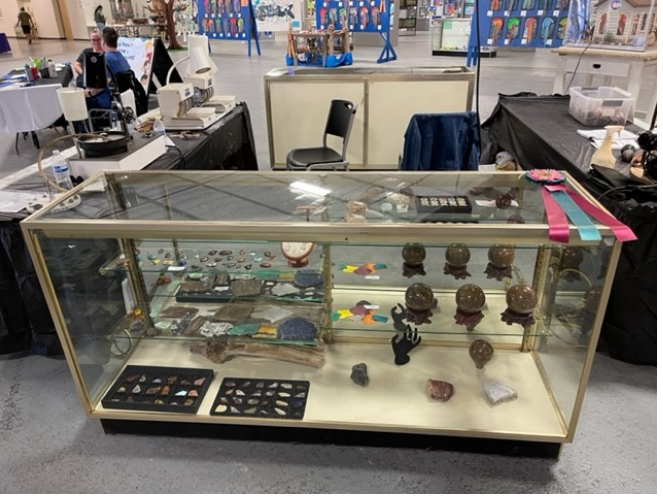
Helen Serras-Herman, OPLC Program Chair

PIMA COUNTY FAIR GOINGS ON

The Pima County Fair is in “full swing”. A big thanks to Dave Richardson for all his work in coordinating sign-up, parking passes, setting up display cases, getting items for display and the list goes on.

Below are the display cabinets and items currently on display. Everything looks just grand.

The display items were from: Twink Monrad, Michele Burkham, Victoria Fila, David Schulte, and Dave Richardson.



Photos by Dave Richardson

FACE TING FASCINATION?

Supporting Tucson's fast growing community
of faceting enthusiasts, Faceters Paradise is
your supply destination featuring the full line
of Ultra Tec Faceting Machines.

TUCSON'S
ULTRA TEC
SUPPLIES DEALER

Ultra Tec
↓
♦

VISIT US ONLINE
WWW.FACETERSPARADISE.COM

Faceters Paradise

355 E FORT LOWELL RD.
TUCSON, AZ 85705

520.907.5527

OPEN 11AM - 4PM DAILY

JEWELERS SUPPLIES

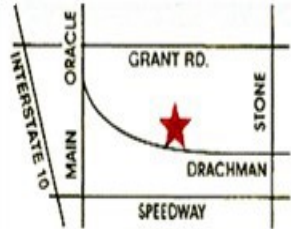
GOLD ★ SILVER ★ SHEET ★ WIRE

SINCE 1967

For The Professional And Hobbyist

Now open 10-3 Tuesday, Thursday, Friday and Saturday

Closed Monday,
Wednesday, and Sunday



- SILVERSMITH TOOLS
- LAPIDARY EQUIPMENT
- FOREDOM TOOLS
- STONES • BEADS
- FINDINGS • CHAINS
- HOW TO BOOKS



882-8750

Starr Gems, Inc.

www.silversupplies.com

220 W. DRACHMAN

SHOWCASES & JEWELRY
DISPLAY ACCESSORIES

DAH ROCK SHOP

- Crystals
- Fossils
- Minerals
- Meteorites
- Faceted Stones
- Cabochons
- Turquoise
- Tumbled Stones
- Eggs & Spheres



YOUR BEAD STOP

All Beads Picked
by Resident Graduate
Gemologist

Huge Selection of
Sterling Silver Findings



Ad Expires 12-31-22

3401 N. Dodge, 3 blocks N. of Ft. Lowell (520) 323-0781

STERLING SILVER JEWELRY
BOOKS - SLABS - ROUGH
STONES - BEADING SUPPLIES -

**HOURS: (TUES - SAT 10:30 - 5:00)
CLOSED SUN & MON)**

OPLC MEMBERS RECEIVE 10%
OFF ON ALL MERCHANDISE
EXCEPT SPECIALS.
\$10 MINIMUM PURCHASE

STERLING SILVER WIRES AND
SHEET RECEIVE THE NEXT
PRICE BREAK

Allen's Treasure House

Lapidary supplies, minerals, decorative objects, watch batteries, maps, prospecting tools, much more.



www.allens-treasure-house.com

4313 E Grant Road (near Columbus); Tucson AZ 85712;
(520) 326-5550; mail@allens-treasure-house.com

Usually open:

Monday, Wednesday, Thursday, Friday: 9:45 AM - 5:30 PM;

Saturday 9:45 AM - 5:00 PM

Closed major holidays.

Ad Expires 11-30-22



Kent's Tools

Jewelry - Lapidary
Tools - Supplies

2745 N. 1st Ave. Tucson, AZ 85719

Lindstrom
Wubbers
3M
OptiVISOR

Euro Tool
Covington Engineering
Cab King
JSP



**OPLC Members receive 10% off most items
except net priced merchandise.**

Monday - Saturday 9 AM to 3PM
520-461-1350

Extended hours coming soon!

Ad Expires 11-30-22

COMMITTEES

ADVERTISING

Twink Monrad (520) 297-9454

BUILDINGS, GROUNDS & EQUIPMENT

Wayne Klement (520) 954-6298

Mike Tucker (520) 400-9656

Pete Petersen (520) 886-9021

PROGRAMS

Helen Serras-Herman (520) 761-9907

CLASSES

Victoria Fila (520) 664-0302

FIELD TRIPS (COMMITTEE)

Victoria Fila (520) 664-0302

HISTORIAN

Twink Monrad (520) 297-9454

JUNIOR EDUCATION

Teresa McCabe 520-490-7850

RAFFLE/DOORPRIZE

Kim Filips (520) 743-8070

KITCHEN

General Membership

LIBRARIAN

Bill Cascio (520) 638-8144

MEMBERSHIP

Janet Keisler (520) 333-3398

SECURITY

John Poole (520) 777-5588

BUSINESS MEETING REFRESHMENTS

Twink Monrad (520) 297-9454

Victoria Fila (520) 664-0302

SILENT AUCTION

Dan Harmsen (520) 721-8452

NEWSLETTER

Wayne Klement (520) 954-6298

WEBSITE

Brian Peterson (520) 449-2660

ARIZONA & GEM LAPIDARY ROUGH

**OPEN!
OPEN!
OPEN!**

**NEW
LOCATION!
GREAT
ROCKS!**



**Central Tucson
5817 E. Speedway Blvd
520-399-6641**

www.ArizonaLapidary.com

Hours

Tues - Fri 11am - 4:30pm

Sat 11am - 4pm

Closed Sunday

MONEY SAVING DISCOUNTS

- **Allen's Treasure House** 10% off of finished jewelry (except custom made), decorator items, and novelties (excludes unformed minerals and specimen sets). 5% off of all other merchandise not having its own discount schedule, including unformed minerals and specimen sets. No discounts on services except per applicable schedule if any. **See ad in newsletter.**
- **DAH Rock Shop** - 10% on most items, \$10 minimum purchase. 520-323-0781 **3401 Dodge Blvd, Tucson. See ad in newsletter.**
- **Kent's Tools** - 10% discount except for net priced merchandise. 520-461-1350 - **2745 N 1st Avenue, Tucson 85719. See ad in newsletter.**
- **Tucson Mineral & Gem World** - 10% 520-883-0682 Web address: www.tucsonmineral.com **2801 South Kinney Road, Tucson**
- **Arizona Lapidary** - Arizona Lapidary & Gem Rough - 5817 E Speedway Blvd. 10% Discount off rough rock 520-399-6641. **See Ad in newsletter.**
- **Silver Lining Gemstones** - 20-35% discount on most items. 520-203-8430. Mike DeMeritt on his Instagram Store (IG Name: **silverlininggemstones**)
- **Starr Gems** - 10% Discount on select merchandise, and 3-ounce price break for all silver purchases. **220 W Drachman, Tucson. See Ad in newsletter.**

Rate Schedule for Advertisements - - - Ad Sizes & Prices

1/8 of a page -
2" H by 3 1/2" W
\$36.00 per year
\$18.00 per half year
\$3.00 per month

1/4 of a vertical page -
4 1/2" H by 3 1/2" W
\$48.00 per year
\$24.00 per half year
\$4.00 per month

1/4 of horizontal page -
2" H by 7 1/4" W
\$48.00 per year
\$24.00 per half year
\$4.00 per month

1/2 page - 4 1/2" H by 7 1/4" W
\$96.00 per year
\$8.00 per month

Full page - 9 1/2" H by 7 1/4" W
\$168.00 per year
\$14.00 per month

BEADHOLIDAY

Tucson's beading destination

KUMIHIMO

SWAROVSKI CRYSTAL

CZECH GLASS

BETSY BEADER

SEMI-PRECIOUS

STONES

SLEEPING BEAUTY

TURQUOISE

CLASPS

BEADS

WIRE

AND MORE



520.696.0032

355 E FORT LOWELL RD

TUCSON, AZ 85705



SKIP THE TRIP

SHOP WITH US ONLINE AT

WWW.BEADHOLIDAY.COM



ALL THE FINDINGS YOU NEED

OPEN 11AM – 4:30PM DAILY

CURRENT LAB SESSIONS - FEBRUARY 1, 2022

Cabbing

Monday 9am-2pm Mike Wendler (817) 751-0622

6pm-9pm Donovan Wagner (520) 869-2050

Tuesday 9am - 12 Noon Dan Lilly (801) 995-9692

6pm-9pm Brian Petersen (520) 449-2660

Wednesday 6pm-9pm Keith Haubert (520) 784-8283

Thursday 6pm-9pm Tom Tuten (520) 260-5423

Saturday

9am-2pm Ron Bryan (619) 495-7967 - **Every 4th Saturday**

2pm-5pm Peter Moma (907) 947-6768

Sundays 9am - Noon Gloria Shenanaquet (520) 396-9715

12 Noon - 2:00pm Paul Fickle (520) 883-6061

2pm-5pm Malcolm Curry (360) 707-1360

Silversmithing

Monday 12 Noon - 3pm David Schulte (520) 954-8554

Tuesday 9am-12pm John Poole (520) 777-5588

Wednesday 9am-3pm Elizabeth Boccardo 520-245-0923

Thursday 9am-3pm Elizabeth Boccardo 520-245-0923

6pm-9pm Bill Casico (520) 343-9927

Friday 9am-1pm Giac D'Acquisto (520) 444-4143

1pm-4pm Lou Ackerman (520) 290-6968

Saturday 9am-12pm Jaime Germaine (520) 288-0135

Sunday 10-3 Giac D'Acquisto (520) 444-4143

Faceting

Monday 9am-12pm Dave Richardson (520) 245 - 2172

Wednesday 5:30pm-8:30 Dave Richardson (520) 245 - 2172

Sunday 12:30pm-3:30pm Dave Richardson (520) 245 - 2172

Casting

New Classes start in September on the first Wednesdays 4 to 7 and will run 4 weeks and start every other month from there. The off months will be open labs.

Call Chuck Lundstrom (520) 241-9262

Tuesday 9am-2pm Liz (818) 300-5262

Saw Room

Sunday 9am-Noon Mike Tucker (520) 400-9658

Tuesday 9am-Noon Betty Mehlhoff (253) 208-7460

Thursday 9am-Noon Pete Peterson (520) 886-9021

2022 GEM SHOW ✨ January 26 - February 14, 2022 - 9am - 7pm



RAINING TUCSON, AZ ROCKS

SPECIALIZING IN

**METEORITES · FOSSILS
IMPACTITES / MOLDAVITE · SLABS
MINERALS · JEWELRY · ROUGH
CABS · POLISHED MATERIAL**

LAPIDARY EQUIPMENT REPAIR · POLISHING
SLAB CUTTING · CABLING SERVICES

OPEN YEAR ROUND
Tuesday - Saturday
10am - 6pm

RainingRocks@hotmail.com

3844 EAST 5th ST
Tucson, AZ 85716
(520) 345-7957

ItsRainingRocks.com

Also visit us at our 2nd location - Building E in Mineral City!

**TUCSON'S
NEWEST
ROCK SHOP!**

Board Meeting Minutes 5/3/2022 OPLC

Minutes of May 3, 2022 OPLC Board Meeting 5.00 pm

Dave Richardson for Bill Penrose

Present: Victoria Fila presiding, Dave Richardson, Mark Davidson, David Schulte, Donovan Wagner, Elisabeth Boccardo, Ted Rupp, John Poole, Wayne Klement, Jan Keisler, Pete Peterson.

A quorum was present.

Treasurer's Report - Mark Davidson – The club had a net positive for both April and the year to date. A large number of shop passes are unaccounted for.

Membership - Jan Keisler – 335 members are signed up for 2022 so far.

Labs status:

Cab lab –Donovan Wagner– Scheduling oil changes in the saws.

Faceting - Dave Richardson – Will work to upgrade the lab to all Ultra Tec machines to reduce different equipment type needs. Will work to keep the upgrade within lab budget.

Casting - no report

Silver – John Poole – All OK.

Saw room – Pete Peterson – Saw room is completely caught up.

Field trips: –Victoria Fila - Will be scheduling a field trip each month starting in October.

New Business -

Fair exhibits - Very few people offered exhibits for the fair.

Lab Log - will be updated to include the By-Laws section 5 requirement and for current needs. Approval will be made by the board by email.

Kudos - Twink Monrad - Teresa McCabe was honored by a teacher that received the education package.

Meeting adjourned at 5:45.

DONATIONS

Thanks to those that have made donations to help keep this club running! We welcome donations so if you have lapidary related items, please contact Dan Harmsen at (520) 721-8452 to arrange a pickup or drop-off. Recent donations:

Anonymous - Rock books, Malachite, used Genie wheels.

Paul Head's daughter -Stephanie Waldo - Polished limb casts, faceted stones, faceting rough, specimens, slabs, agates, meteorite, cabs.

In memory of Robert Powell - books, lapidary aprons (3), slabs, lapis, Chrysoprase, Tiffany rough, smoky quartz and leaded glass for faceting, tools, copper minerals, jade, sapphire, ruby, rhyolite and opals.

A donation of \$50.00 from Ingrid Monrad, in memory of Steve Smith a club member that passed away.

One compressor to the casting lab by Chuck Lundstrom.