

“CUTTING REMARKS”

The Official Publication of the Old Pueblo Lapidary Club
520-323-9154

Officers

President Victoria Fila 664-0302
Vice President Dave Richardson 245-2172
Secretary Bill Penrose 780-1143
Treasurer Mark Davidson 975-6075

Board of Directors

2021 - 2022 David Schulte 954-8554
2021 - 2022 Donovan Wagner 869-2050
2022 - 2023 Ted Rupp 743-8012
2022 - 2023 Mike Tucker 400-9656
2022 Elizabeth Boccardo 245-0923

Membership Chairperson

Janet Keisler 333-3398

Please join us September 10th, at 9AM for the monthly meeting. There is an optional social hour that begins at 8:00am followed by the monthly meeting commencing at 9:00am. See meeting minutes for details. Visitors are always welcome.



Articles or news to be included in the *Cutting Remarks* should be emailed to your Editor, Wayne Klement (wayneklem@aol.com) or call him at 520-954-6298. Submission deadline is the 25th of each month. Thanks!

THE PREZ SEZ by Victoria Fila, President

Prez says:

Hello everyone, I hope you are staying dry. We have been getting a lot of rain so hoping that will help unearth or move material to where we can find them.

We do have a field trip plan for September the 24th. Charlie Hirschy will be leading the trip to Winslow AZ. Details are attached to the newsletter. Charlie will be in some material he gathers on a prior trip so you can see what you will be collecting.

Next monthly meeting is on 9/10/22 our guest speaker is David Nystrom, President Dewey Humboldt, Historical Society their presentation is on History and Mining of the Dewey - Humboldt area.

Next board meeting is on 8/30/22 at 5:30 PM. Everyone is welcome to come to the meeting.

Until we see each other again, be safe, healthy and happy.

Victoria Fila,
OPLC President



WELCOME NEW MEMBERS



Mellissa Briggs
Lissette Calderon
Alan Copperstone
Donn Cuson
Val Damon
Johnny Dubin
Trevor Jones
Brenda Lisitono
Patsy Moore

Beth Patrick
Wm T. & Christine
Reynolds
Walter Senior
James Shea
David Sullivan
Jessica Tinker
Karina Velarde

Cutting Remarks, Volume 2022, Issue 9, September 2022. Published monthly by the Old Pueblo Lapidary Club, 3118 N. Dale, Tucson, AZ 85712. Telephone: (520) 323-9154, a non-profit organization.

OPLC SPEAKERS 2022 – 2023

Here is the latest list for our upcoming speakers:

October 8 – Wolfgang Vaatz- **his jewelry art**

November 12 – Jan Rasmussen, geologist, **Mineralogy of Arizona** updated book edition

December – no speaker, holiday party

January 14, 2023- Helen Serras-Herman – **The Mitchell & Merrick Silver Mine and 9 Canyons on Navajo Land**

March 11, 2023, Chris Osterman –**His recent Mining trip to Portugal, Romania, and Bulgaria**

Old Pueblo Lapidary Club August General Meeting Minutes 08/13/2022

Presentation "Overcoming Those Digital Photo Blues" by Mark Marikos.

Thanks to Wayne Klement for supplying the goodies for breakfast this morning.

Volunteers to assist it this task are welcomed. Costs are covered by the club to a \$40 limit.

Motion to approve last month's club meeting minutes/newsletter. Seconded? All in favor.

Treasurer Report given by Mark Davidson indicated that the Treasury is in good standing.

Membership status - (Janet Keisler) There were 371 members in good standing as of this meeting. Jan is looking for a volunteer to take over as Membership Chairman. If you are interested, please contact Janet or a Board Member.

Annual Silent Auction is 11/05/2022, starting at 9:00, open to the public.

Tail Gate sale is after the October meeting 10/08/2022. Members can check in and setup in the north lot. The sale is open to the public.

Field Trips - Victoria is working on field trip in the Holbrook area for September. More details to follow.

Library status - Library is open. Books can be checked out for two-week periods.

Volunteers are still needed as lab monitors. If willing to help the club, please volunteer.

Door prize was won by Brenda Liscamo.

Raffle proceeds were \$200.

Members voted to adjourn the meeting.

Meeting minutes recorded by Dave Richardson.

Winslow Rockhounding Trip

I have 3 spots we can search near Winslow and Woodruff. Materials to be found will include different colors and types of petrified wood, jasper, agates, quartz, and chalcedony to name a few. Winslow is about a 5.0 hour drive from Tucson. You can camp in the area or stay in hotels in Winslow, Holbrook or Flagstaff. A high clearance vehicle is best but 4wd isn't needed. And I've seen people drive a small 2WD sedan, so the gravel roads are rutted in a few spots but not too bad.

All locations are mostly surface collecting, generally flat with some slopes to check out if you're healthy.

I suggest we start on Saturday sometime around noon. We'll meet at the Flying J truck stop off I-40, 400 Transcon Lane, Winslow. We'll visit two locations on Saturday and the third Sunday morning. If we only get to one spot Saturday, then we can do two on Sunday and allow time to drive home.

Camping

Homolovi State Park Campground

Mchood Park Campground

Hotels

Several in Winslow but I'd recommend the Best Western in Winslow or Holbrook.

Here's what we found at these spots in March 2022.



OPLC Speaker September 10, 2022 – David Nystrom Mining History of Dewey-Humboldt



Exhibits from the DHHS Museum, photos HSH



David Nystrom, photo courtesy DHHS



We are in for another special great treat for our September 10, 2022, OPLC monthly meeting, with David Nystrom, President and Board Chair of the Dewey-Humboldt Historical Society.

Originally two separate communities of Dewey and Humboldt, the town now known as Dewey-Humboldt became one after a voters' supported incorporation in 2004. The historic town is located 12 miles east of Prescott, near the Bradshaw Mountains and the Prescott National Forest. While the Dewey area provided agricultural and ranching economy, Humboldt's prosperity was based on mining, with over 1,500 mines listed in Yavapai County.

David Nystrom will share with us the rich history of the mining area with historic photos and stories. He will also tell us about the recent demolition of the smokestack, and the historical society's efforts to re-establish their museum. David has a wealth of knowledge and leads tours of the historic area. He recently led a tour of the Logan Mine Site located in the Cherry Mining District.

You can visit the Dewey-Humboldt Historical Society's website at www.dhhsmuseum.org

In this newsletter, I am sharing with all of you my article **Arizona's Humboldt Mining District**, published in the January 2020 issue of Rock & Gem magazine.

Please make sure you don't miss this great presentation.

Looking forward to seeing you all,

Helen Serras-Herman, OPLC Program Chair

FACE TING FASCINATION?

Supporting Tucson's fast growing community
of faceting enthusiasts, Faceters Paradise is
your supply destination featuring the full line
of Ultra Tec Faceting Machines.

TUCSON'S
ULTRA TEC
SUPPLIES DEALER

Ultra Tec
↓
♦

VISIT US ONLINE
WWW.FACETERSPARADISE.COM

Faceters Paradise

355 E FORT LOWELL RD.
TUCSON, AZ 85705

520.907.5527

OPEN 11AM - 4PM DAILY

JEWELERS SUPPLIES

GOLD ★ SILVER ★ SHEET ★ WIRE

SINCE 1967

For The Professional And Hobbyist

Now open 10-3 Tuesday, Thursday, Friday and Saturday

Closed Monday,
Wednesday, and Sunday



- SILVERSMITH TOOLS
- LAPIDARY EQUIPMENT
- FOREDOM TOOLS
- STONES • BEADS
- FINDINGS • CHAINS
- HOW TO BOOKS



882-8750

Starr Gems, Inc.

www.silversupplies.com

220 W. DRACHMAN

SHOWCASES & JEWELRY
DISPLAY ACCESSORIES

DAH ROCK SHOP

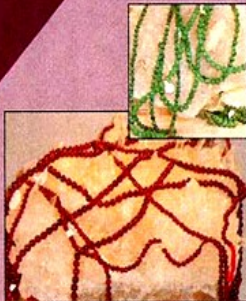
- Crystals
- Fossils
- Minerals
- Meteorites
- Faceted Stones
- Cabochons
- Turquoise
- Tumbled Stones
- Eggs & Spheres



YOUR BEAD STOP

All Beads Picked
by Resident Graduate
Gemologist

Huge Selection of
Sterling Silver Findings



Ad Expires 12-31-22

3401 N. Dodge, 3 blocks N. of Ft. Lowell (520) 323-0781

STERLING SILVER JEWELRY
BOOKS - SLABS - ROUGH
STONES - BEADING SUPPLIES -

**HOURS: (TUES - SAT 10:30 - 5:00)
CLOSED SUN & MON)**

OPLC MEMBERS RECEIVE 10%
OFF ON ALL MERCHANDISE
EXCEPT SPECIALS.
\$10 MINIMUM PURCHASE

STERLING SILVER WIRES AND
SHEET RECEIVE THE NEXT
PRICE BREAK

Allen's Treasure House

Lapidary supplies, minerals, decorative objects, watch batteries, maps, prospecting tools, much more.



www.allens-treasure-house.com

4313 E Grant Road (near Columbus); Tucson AZ 85712;
(520) 326-5550; mail@allens-treasure-house.com

Usually open:

Monday, Wednesday, Thursday, Friday: 9:45 AM - 5:30 PM;

Saturday 9:45 AM - 5:00 PM

Closed major holidays.

Ad Expires 11-30-22



Kent's Tools

Jewelry - Lapidary
Tools - Supplies

2745 N. 1st Ave. Tucson, AZ 85719

Lindstrom
Wubbers
3M
OptiVISOR

Euro Tool
Covington Engineering
Cab King
JSP



**OPLC Members receive 10% off most items
except net priced merchandise.**

Monday - Saturday 9 AM to 3PM
520-461-1350

Extended hours coming soon!

Ad Expires 11-30-22

COMMITTEES

ADVERTISING

Twink Monrad (520) 297-9454

BUILDINGS, GROUNDS & EQUIPMENT

Wayne Klement (520) 954-6298

Mike Tucker (520) 400-9656

Pete Petersen (520) 886-9021

PROGRAMS

Helen Serras-Herman (520) 761-9907

CLASSES

Victoria Fila (520) 664-0302

FIELD TRIPS (COMMITTEE)

Victoria Fila (520) 664-0302

HISTORIAN

Twink Monrad (520) 297-9454

JUNIOR EDUCATION

Teresa McCabe 520-490-7850

RAFFLE/DOORPRIZE

Kim Filips (520) 743-8070

KITCHEN

General Membership

LIBRARIAN

Bill Cascio (520) 638-8144

MEMBERSHIP

Janet Keisler (520) 333-3398

SECURITY

John Poole (520) 777-5588

BUSINESS MEETING REFRESHMENTS

Twink Monrad (520) 297-9454

Victoria Fila (520) 664-0302

SILENT AUCTION

Dan Harmsen (520) 721-8452

NEWSLETTER

Wayne Klement (520) 954-6298

WEBSITE

Brian Peterson (520) 449-2660

ARIZONA & GEM LAPIDARY ROUGH

**OPEN!
OPEN!
OPEN!**

**NEW
LOCATION!
GREAT
ROCKS!**



**Central Tucson
5817 E. Speedway Blvd
520-399-6641**

www.ArizonaLapidary.com

Hours

Tues - Fri 11am - 4:30pm

Sat 11am - 4pm

Closed Sunday

MONEY SAVING DISCOUNTS

- **Allen's Treasure House** 10% off of finished jewelry (except custom made), decorator items, and novelties (excludes unformed minerals and specimen sets). 5% off of all other merchandise not having its own discount schedule, including unformed minerals and specimen sets. No discounts on services except per applicable schedule if any. **See ad in newsletter.**
- **DAH Rock Shop** - 10% on most items, \$10 minimum purchase. 520-323-0781 **3401 Dodge Blvd, Tucson. See ad in newsletter.**
- **Kent's Tools** - 10% discount except for net priced merchandise. 520-461-1350 - **2745 N 1st Avenue, Tucson 85719. See ad in newsletter.**
- **Tucson Mineral & Gem World** - 10% 520-883-0682 Web address: www.tucsonmineral.com **2801 South Kinney Road, Tucson**
- **Arizona Lapidary** - Arizona Lapidary & Gem Rough - 5817 E Speedway Blvd. 10% Discount off rough rock 520-399-6641. **See Ad in newsletter.**
- **Silver Lining Gemstones** - 20-35% discount on most items. 520-203-8430. Mike DeMeritt on his Instagram Store (IG Name: **silverlininggemstones**)
- **Starr Gems** - 10% Discount on select merchandise, and 3-ounce price break for

DONATIONS

Thanks to those that have made donations to help keep this club running! We welcome donations so if you have lapidary related items, please contact Dan Harmsen at (520) 721-8452 to arrange a pickup or drop-off. Recent donations:

Ted Rupp - Montana agate, jasper, agates

Lisa Hederson - Tibetan coral beads, opal, jasper and agate rough, gem bags,

Anonymous - books, fire agate, agates, thunder eggs, enameling colors, brass, copper, casting wax, tools, saw, assorted grit,

Jamey Giffords - Tumbler Bucket

Peter Jensen - Jasper, tiger eye, tourmaline, rhyolite

BEADHOLIDAY

Tucson's beading destination

KUMIHIMO
SWAROVSKI CRYSTAL
CZECH GLASS
BETSY BEADER
SEMI-PRECIOUS
STONES
SLEEPING BEAUTY
TURQUOISE
CLASPS
BEADS
WIRE
AND MORE



520.696.0032

355 E FORT LOWELL RD

TUCSON, AZ 85705



SKIP THE TRIP

SHOP WITH US ONLINE AT

WWW.BEADHOLIDAY.COM



ALL THE FINDINGS YOU NEED

OPEN 11AM – 4:30PM DAILY

**THIS IS THE LAB SCHEDULE WHICH IS CURRENT AS OF 9-1-22.
PLEASE CALL THE MONITOR THAT IS RUNNING THE LAB AND MAKE SURE THAT THEY HAVE
SPACE FOR YOU.**

Cabbing

Monday 6pm-9pm Donovan Wagner (520) 869 - 2050
Tuesday 9am - 12pm Dan Lilly (801) 995-9692
1st and 3rd Tuesday - - - 12pm-3PM Liz Williams (818) 300 - 5262
2nd and 4th Tuesday- - -1pm-3:30pm Liz Williams (818) 300 - 5262
3:30-6pm Margarete Harris (520) 561-2313
6pm-9pm Brian Petersen (520) 561-2660
Wednesday 6pm-9pm Keith Haubert (520) 784 - 8283
Thursday No Labs scheduled currently.
Friday No Labs scheduled currently.
Saturday 2nd and 3rd Saturdays Victoria Fila (520) 664-0302
4th Saturday 9am-2pm Ron Bryan (619) 495-7967
Every Week 2pm-5pm Peter Moma (907) 947-6768
Sundays 9pm-12pm Gloria Shenanaquet (520) 396-9715
12pm-2PM Paul Fickle
2pm-5pm Malcolm Curry (360) 707 – 1360

Silversmithing

Monday 9pm-12pm David Schulte (520) 945-8554
Tuesday 9am-12pm John Poole (520) 777-5588
Wednesday 10am-4pm Elizabeth Keller Boccardo (520) 245-0923
6PM-9PM Bill Penrose (520) 780-1143 - On Hiatus
Thursday 10am-4pm Sloane Padilla (520) 808-8699 (text only)
6pm-9pm Bill Casico (520) 343-9927
Friday 9am-3pm Giac D'Acquisto (520) 444-4143
Saturday 9am-12pm David Schulte (520) 945-8554
Sunday 10-3 Giac D'Acquisto (520) 444-4143

Faceting

Monday 9am-12pm Dave Richardson (520) 245 - 2172
Wednesday 5:30 - 8:30 Dave Richardson (520) 245 - 2172
Sunday 12:30pm-3:30pm Dave Richardson (520) 245-2172

Casting

New Classes start in September on the first Wednesdays 4 to 7 and will run
4 weeks and start every other month from there. The off months will be open labs.
Call Chuck Lundstrom (520) 241 - 9262

Tuesday 9am-2pm Liz Williams (818) 300 - 5262

Saw Room

Sunday 9am-Noon Mike Tucker (520) 400-9658
Tuesday 9am-Noon Betty Mehlhoff (253) 208-7460
Thursday 9am-Noon Pete Peterson (520) 886-9021

2022 GEM SHOW ✨ January 26 - February 14, 2022 - 9am - 7pm



RAINING TUCSON, AZ ROCKS

SPECIALIZING IN

**METEORITES · FOSSILS
IMPACTITES / MOLDAVITE · SLABS
MINERALS · JEWELRY · ROUGH
CABS · POLISHED MATERIAL**

LAPIDARY EQUIPMENT REPAIR · POLISHING
SLAB CUTTING · CABLING SERVICES

OPEN YEAR ROUND
Tuesday - Saturday
10am - 6pm

RainingRocks@hotmail.com

3844 EAST 5th ST
Tucson, AZ 85716
(520) 345-7957

ItsRainingRocks.com

Also visit us at our 2nd location - Building E in Mineral City!

**TUCSON'S
NEWEST
ROCK SHOP!**

Minutes of September 6, 2022 OPLC Board Meeting

5:30 pm, W Penrose, wrp0143@comcast.net

Present: Victoria File presiding, Dave Richardson, Mark Davidson, Bill Penrose, David Schulte, Ted Rupp, John Poole, Wayne Klement, Janet Keisler, Twink Monrad, Donovan Wagner, Mike Tucker, Pete Peterson, Danny Harmsen, Elizabeth Boccardo, Sandra Penrose.

A quorum was present.

An announcement was made that Pete Valentine, member and monitor, had died while visiting in Idaho. After this meeting, word came that Andy Herman, member and husband of Helen Serras-Herman, had also died.

Treasurer's Report - Mark Davidson –Financial status remains positive and healthy. 34% of this year's budget has been spent so far (Exact figures available to members on request.)

Membership - Jan Keisler – 381 members in good standing

Silent Auction: Danny Harmsen – The silent auction is scheduled for November 5, 9 am to 2 pm. Star of the auction will be a meteorite.

Labs status:

Cab lab – Donovan Wagner – A new trim saw and new wheels have been ordered.

Faceting - Dave Richardson – There are four new faceters.

Casting - no report

Silver – John Poole – Both John's and Bill's classes have finished. The waiting list is almost cleared.

Saw room – Pete Peterson – Not much throughput lately. Heating problems with the 14 inch saw. eld trips: – Victoria Fila – A trip is scheduled for Sept 24 to the Winslow area for petrified wood, jasper, and agate. It will be led by Charlie Hirishy. See newsletter.

Refreshment status –Wayne will continue for now.

Liability insurance clarification regarding extent of coverage – Dave Richardson – Are there gaps in liability coverage? Guests, lab users, and clubs are covered, but are renters covered? We do not have a definitive answer on this. Dave will ask the insurance carrier.

Can we refer to payment as a donation rather than a fee?

New Business –

Should the Faceters' Guild pay the new rental fees of \$100 per 4 hours? Motion that we should grandfather them in at the current rental rate. Motion passed to charge the former rate of \$300.

The Mineral Museum should be invited to join the OPLC. Members should be made aware of the museum.

The next tailgate sale will be in October. John will organize it.

Meeting adjourned 5:55 pm.

The next Board meeting will be on September 27 at 5:30.

Arizona's Humboldt Mining District

In the rolling hills of the high desert of Northern Arizona, about 85 miles north of Phoenix and 12 miles east of Prescott, the valley of the Agua Fria River is nestled next to the Bradshaw Mountains, and the Prescott National Forest. It is an area rich in history, dating back to the Native American people who originally lived there, then Spanish explorers who arrived in the 1500s, and finally, the settlers and miners that came in the 1800s.

TWO BECOME ONE

Once two distinct communities, Dewey and Humboldt became one town after a voters' supported incorporation in 2004. Today the town is known as Dewey-Humboldt. While the Dewey area provided agricultural and ranching economy, Humboldt's prosperity was based on mining. The communities are located in Yavapai County, which sits at an elevation of 4,556 feet, with a mild four-season climate, and at one time home to more than 1,500 mines listed.

Back in 2014, my husband and I enjoyed a backcountry tour of the mining areas of the Bradshaw Mountains, with tour guide Kevin Leonard, a local miner and historian. We also visited the Dewey-Humboldt Museum, which is located in the heart of the town's historic district. The museum is supported by the Dewey-Humboldt Historical Society, and exhibited mining tools and equipment, testing and assaying equipment from the Iron King Mine assay office, and a small mineral collection.



During the Humboldt District Mining tours we visited the Union Mine claim.

We visited the museum again in 2016, but like so many mines and historic locations in Arizona, when we stopped by this past August of 2019, on our way to the Prescott Gem & Mineral Show, things had changed. The building that once housed the museum is now a private residence, with a no-trespassing sign on the property. Upon inquiring about the museum at the local gift shop, we learned that the museum lost its lease and the building was sold, and the contents of the museum, including the collection, are packed away. We also learned of the passing of our tour guide, Kevin Leonard, in September of 2018.

Nevertheless, in these bleak moments, two bequeaths made by members of the historical society who also passed away recently, are supporting the rebirth of the museum. A lot was purchased and the new museum is being planned.

UNCOMMON VIEW

The Humboldt District Mining tours were truly unique adventures, enjoyed from the seat of a 4-wheel pickup truck, progressing through some incredible locations. We drove over some "roads" - no, hold on, washes with huge boulders, which are "roads" I never thought we could drive or even walk on. When the truck could proceed no further, we walked up dry washes. We crossed mountains, gulches, and streams, and visited forgotten mining camps, and mines that brought wealth to mine owners and investors. Some of the mines still have visible traces of gold, silver, and copper on their walls.

During this same tour, we drove on the Iron King Road and visited the old McCabe Cemetery and federal mining claims, such as the Silver Queen Mine with mining tunnels, and the Union Mine that has a tunnel with beautiful stalactites hanging from the ceiling. Laying about within these tunnels were old mining tools and rusted cans, remnants of the prospectors' arduous life at mining camps.

The Dewey area was settled in 1863 after the discovery of gold on Lynx Creek by pioneer prospector King Woolsey (1832-1879). He founded the Agua Fria Ranch to supply the miners, and built a small quartz mill to work gold ores from nearby hills. In the mid-1870s, a small water-powered, silver-lead furnace, the Agua Fria Furnace, was built to work the ores of the nearby mining area. The area would later become the Iron King Mine.



All of the old mines we visited had old mining tools and rusted cans lying around, remnants of the prospectors' arduous life at mining camps.

An additional form of economic development, the Prescott & Eastern Railroad, was built in 1898 and connected Prescott to Mayer to the south, and the Val Verde Smelter in Humboldt. After the smelter burnt to the ground in 1902, a larger smelting plant was built, serving much of the then Arizona Territory. In 1905, the town was renamed Humboldt, in honor of Alexander Von Humboldt, a noted Prussian geographer, who had visited the area (New Spain at the time) in 1838. The rich ores, along with the smelter and the convenience of the railroad, contributed to the district's mining boom and population growth.

When visiting Humboldt today, the smelter's smokestack stands alone, casting its shadow over the century-old town buildings. It is a remnant and reminder of the region's mining history.

The Blue Bell Mine, located south of Mayer, was one of the most productive mines within the Bradshaw Mountains during the World War I era. At the time, mineral prices were high and the mine had a direct connection with the smelter via railway. However, the



The sought after gold-in quartz ore from the Bradshaw Mountains, in Yavapai County, Arizona, this one being more quartz than gold.

THE ROAD REPORT



And, when the truck could go no further, we walked up the wash in order to reach the Queen Mine claim. Walking ahead of me are the late Kevin Leonard and my husband, Andrew Herman.



The opening to the Silver Queen Mine, a popular tour destination within the Bradshaw Mountains.

prosperity was short-lived, and the mining boom came to an end with the 1929 financial crash. The mines and smelter closed but re-opened in 1934. The nearby Iron King mine then became the most productive mine in the Bradshaws, producing \$100 million in gold, silver, lead and zinc, until its permanent closure in 1968 (Robert L. Spude, *Central Arizona Ghost Towns*, Las Vegas Nevada Publications, 1978).

Incidentally, the Bradshaw Mountains are named after William D. Bradshaw of North Carolina, an

engineer who came to the area as a prospector during the 1863 Walker expedition at Lynx Creek.

EYEING FUTURE EXPLORATION

The Dewey-Humboldt Historical Society (<http://www.deweyhumboldthistoricalsociety.org/>) occasionally leads tours to some of the area's abandoned and forgotten mining camps and Native American ruins. I do hope that someone can revive Leonard's mining history tours on a more regular basis, and offer visitors a glimpse of the past, and an understanding of the hardships that miners endured and the fleeting rewards they received.

The future site of the Dewey-Humboldt Historical Society Museum will be conveniently located along Arizona Route 69, about 1/10 of a mile north of the intersection with Main Street in Dewey-Humboldt, as the President of the DHHS, David Nystrom, kindly shared with me. I truly look forward to returning and visiting the new museum and reporting back to all of you.



Helen Serras-Herman, a 2003 National Lapidary Hall of Fame inductee, is an acclaimed gem sculptor and gemologist with over 37 years of experience in unique gem sculpture and jewelry art.

Visit her website at www.gemartcenter.com and her business Facebook page at Gem Art Center/Helen Serras-Herman.

IT'S GETTING TO BE THAT TIME OF YEAR AGAIN...



9TH ANNUAL SILENT AUCTION OLD PUEBLO LAPIDARY CLUB

3118 N. Dale, Tucson, AZ 85712
Free parking - Free admission

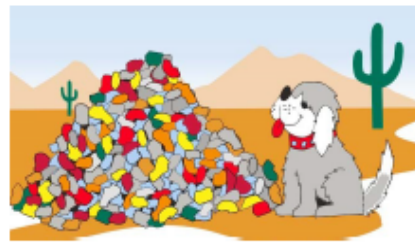
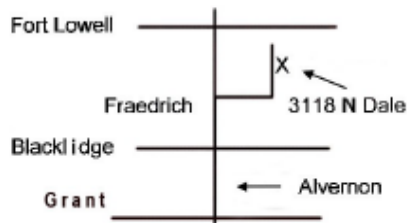


DATE: Saturday, November 5, 2022 **HOURS:** 9:00am—2:00pm

This is once-a-year chance to select all your mineral and lapidary needs from a myriad of mineral specimens, turquoise, faceting rough, cutting material, slabs, polished stones, beads, equipment - rock saws, ring saw, cab grinders, kilns, faceting machines, etc.... NOTEWORTHY ITEM - Canyon Diablo (iron) Meteorite. There will also be a "Kid's only table".

One of nine tables will be randomly called and replenished every 15 minutes.

Come see us on the web: www.lapidaryclub.org



OCTOBER 8th TAILGATE SALE

Old Pueblo Lapidary Club—3118 North Dale

SECOND SATURDAY OF OCTOBER

AFTER THE GENERAL MEETING!!

OPLC members only as sellers!!

Items for sale **MUST** be related to the lapidary or
metalsmithing arts or OPLC activities!

Parking for vendors in North Lot-- FROM 8:00 AM TO 8:30 AM only.

The North Parking Lot **WILL** be open to monitors working that day.

The South Parking Lot will be open to members and shoppers.

Participants need to bring their own tables.

Again, the tailgate sale will **NOT** start until the meeting is over

If any questions call John Poole @ 520-777-5588